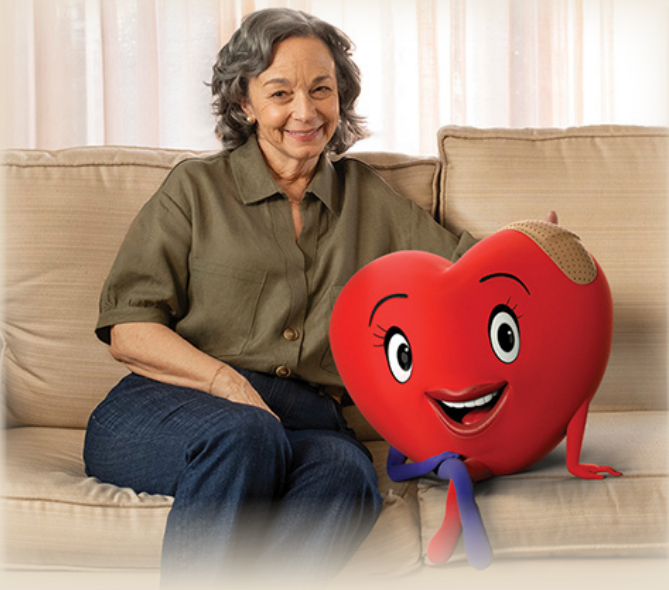


For adults at increased risk of a major adverse cardiovascular event

 **Repatha**
(evolocumab) injection
140 mg/mL

listen to your
heart



In a study of adults with cardiovascular disease,
Repatha® + a statin LOWERED LDL-C
by an average of

63%

IN 3 MONTHS

APPROVED USE

What is Repatha®?

Repatha® is an injectable prescription medicine used:

- to reduce the risk of major adverse cardiovascular (CV) events, such as death from cardiovascular disease, heart attack, stroke, certain types of chest pain conditions (unstable angina) requiring hospitalization, or certain types of heart surgery, in adults at increased risk for these events.

IMPORTANT SAFETY INFORMATION

Do not use Repatha® if you are allergic to evolocumab or to any of the ingredients in Repatha®.

Please see additional Important Safety Information.

WELCOME

WHAT IS
LDL-C?

ABOUT
REPATHA®

YOUR LDL-C
GOALS

LDL-C
TRACKER

SUPPORT

CO-PAY CARD

IMPORTANT
SAFETY
INFORMATION

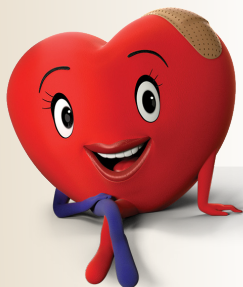
Hi there!

If you are struggling to lower your LDL-C (bad cholesterol), and have a higher risk of a major cardiovascular event like a heart attack or stroke, you might be feeling overwhelmed.

Even if you're trying your best with diet, exercise, and a statin, sometimes you need to do more to get your LDL-C to recommended levels.

The good news is now you're here. And with this brochure, we're going to help you understand how you can lower your LDL-C with Repatha®.

**Love,
Your Heart**



IMPORTANT SAFETY INFORMATION

Before you start using Repatha®, tell your healthcare provider about all your medical conditions, including if you are allergic to rubber or latex, are pregnant or plan to become pregnant, or are breastfeeding or plan to breastfeed. Repatha® is available as prefilled single-dose SureClick® autoinjectors and prefilled single-dose syringes that either contain dry natural rubber (a derivative of latex) in the needle cover or are not made with natural rubber latex. The carton and "Instructions for Use" will state if your prefilled single-dose SureClick® autoinjector or prefilled single-dose syringe contains dry natural rubber. The single-dose Pushtronex® system (on-body infuser with prefilled cartridge) is not made with natural rubber latex.

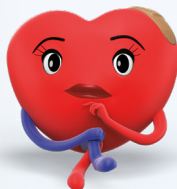
Tell your healthcare provider or pharmacist about any prescription and over-the-counter medicines, vitamins, or herbal supplements you take.

Please see additional Important Safety Information.

High LDL-C can put you at risk for a heart attack or stroke



You can't feel plaque in your arteries, but it may be there!



What is LDL-C and why is it called bad cholesterol?

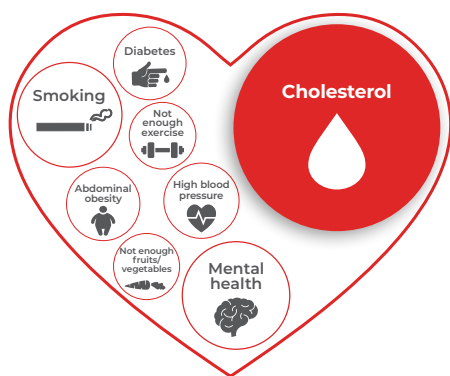
LDL-C stands for “low-density lipoprotein cholesterol.” It’s called bad cholesterol because high levels of LDL-C can form plaque, which builds up in your artery walls. Too much buildup puts you at risk of a serious cardiovascular event.

High LDL-C usually doesn't have any symptoms, so many people might not think too much about it—until they experience a heart attack, stroke, or need a stent or bypass surgery—**which is why high LDL-C must be lowered.**

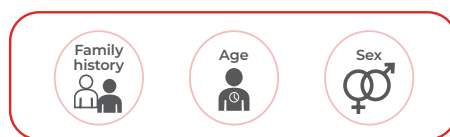
Factors that increase your risk of heart attack and stroke

High LDL-C is one of the most important factors **we can change** to reduce the risk of a heart attack.

Risk factors that **can be changed**



Risk factors that **can't be changed**



Did you know?

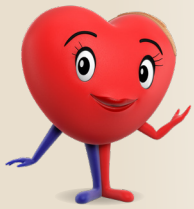
More than **800,000 people** in the US have a heart attack each year. About **75%** of them are experiencing their first heart attack. And after one heart attack, you're more likely to have another within a year.

IMPORTANT SAFETY INFORMATION

What are the possible side effects of Repatha® (evolocumab)?

Repatha® can cause serious side effects including serious allergic reactions. Stop taking Repatha® and call your healthcare provider or seek emergency help right away if you have any of these symptoms: trouble breathing or swallowing, raised bumps (hives), rash or itching, swelling of the face, lips, tongue, throat or arms.

Please see additional [Important Safety Information](#).



How Repatha® can help

Repatha® reduces the risk of a major cardiovascular event by lowering LDL-C.

For adults at increased risk of a major adverse cardiovascular event



WELCOME

WHAT IS LDL-C?

ABOUT REPATHA®

YOUR LDL-C GOALS

LDL-C TRACKER

SUPPORT

CO-PAY CARD

IMPORTANT SAFETY INFORMATION

Trying to lower the risk of **another heart attack and your LDL-C?**

In a study of adults with cardiovascular disease taking statins,

Repatha® reduced heart attack risk by

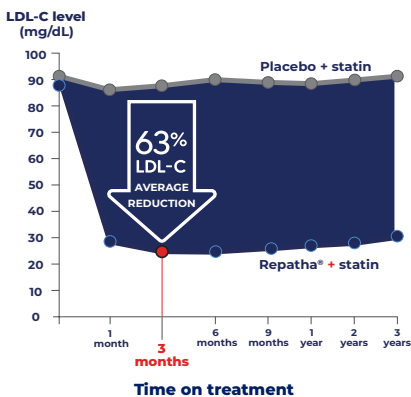
27%

Patients not treated with Repatha® had more heart attacks (4.6%) compared to those treated with Repatha® (3.4%).

Repatha® lowered LDL-C by an average of

63%

in 3 months



We can get our LDL-C to a better place!

Trying to lower the risk of your **first heart attack and your LDL-C?**

In a study of adults at increased cardiovascular risk, without a history of heart attack or stroke, and who may have already been on an additional LDL-C lowering treatment,*

Repatha® reduced risk of a first heart attack by

36%

Patients not treated with Repatha® had more heart attacks (4.1%) compared to those treated with Repatha® (2.7%).

Repatha® lowered LDL-C by an average of

55%

in 12 months

*Any dose of statin with or without ezetimibe.

IMPORTANT SAFETY INFORMATION

What are the possible side effects of Repatha®? (continued)

The most common side effects of Repatha® include: runny nose, sore throat, symptoms of the common cold, flu or flu-like symptoms, back pain, high blood sugar levels (diabetes) and redness, pain, or bruising at the injection site.

Tell your healthcare provider if you have any side effect that bothers you or that does not go away.

These are not all the possible side effects of Repatha®. Ask your healthcare provider or pharmacist for more information. Call your healthcare provider for medical advice about side effects.

Please see additional Important Safety Information.

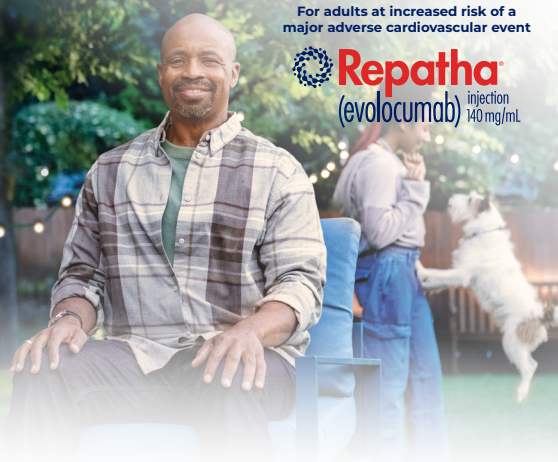
Repatha®.

Prescribed worldwide.

Since 2015, Repatha® has been approved in **75 countries** and prescribed to **over 6 million people** around the world.* Every journey is different, so talk to your doctor and find out if Repatha® is right for you.

*Cumulative post-market exposure estimates from July 2015 through July 2025, on patients that have received at least 1 dose (estimates assume administration) of the product, which was estimated using prescription claims data (IQVIA) for the U.S. and units distributed (Amgen Finance Electronic Data Warehouse) with average drug utilization patterns (MarketScan claims data) for all other regions. Utilization assumptions were applied to calculate the unique number of patients.

For adults at increased risk of a major adverse cardiovascular event



With the convenience of self-administration, you can take Repatha® on the go.*



Scan or click the QR code to learn more about administering, storing, and traveling with Repatha®.



Each SureClick® Autoinjector administers Repatha® in up to 15 seconds. That's just **6.5 minutes** per year for an every 2 week administration.†



In a study, after receiving training from a healthcare professional, **94%** of patients successfully administered at home with the Repatha® SureClick® device.‡

*Store Repatha® in the refrigerator at 36°F to 46°F (2°C to 8°C) until you're ready to use it. Repatha® can also be stored at room temperature at 68°F to 77°F (20°C to 25°C) in its original box for up to 30 days.

†Not inclusive of preparation and time for autoinjector to reach room temperature before administering.

‡Percent of patients who reported 2 full-dose administrations of Repatha® in a study. The patients received training from a healthcare professional on how to self-administer Repatha®.

Take every 2 weeks.
SureClick® autoinjector



140 mg/mL prefilled single-dose autoinjector

Learn more about how to take Repatha®.

Scan or click the QR code on the left for Instructions for Use.

Click on the **Demo Video** below for other helpful resources.



For key injection steps, go to [RepathaSureClick.com](https://www.RepathaSureClick.com)

IMPORTANT SAFETY INFORMATION

Do not use Repatha® if you are allergic to evolocumab or to any of the ingredients in Repatha®.

Please see additional Important Safety Information.



Are your LDL-C levels in check?

For example,

Your recommended LDL-C level may be:

**Less than
70 mg/dL**

if you check one of the boxes below.



Have cardiovascular disease

OR

Diabetes with one or more additional risk factors like high blood pressure, smoking, or abnormal blood sugar levels

Talk to your doctor about your recommended LDL-C levels.

Your LDL-C (bad cholesterol) recommended levels depend on factors such as age, overall health, and cardiovascular health history.

Or it may be:

**Less than
55 mg/dL**

if you check one of the boxes below.



Two or more of the following: stroke, heart attack, symptomatic peripheral artery disease, or recent acute coronary syndrome (within the past year)

OR

1 stroke, heart attack, symptomatic peripheral artery disease, or recent acute coronary syndrome (within the past year)

AND

Multiple high risk conditions such as diabetes, high blood pressure, age 65 or older, smoking, and chronic kidney disease

Only your doctor can tell you what your recommended level should be.

IMPORTANT SAFETY INFORMATION

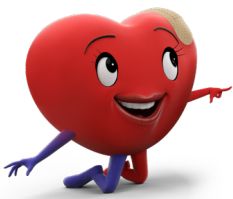
Before you start using Repatha®, tell your healthcare provider about all your medical conditions, including if you are allergic to rubber or latex, are pregnant or plan to become pregnant, or are breastfeeding or plan to breastfeed. Repatha® is available as prefilled single-dose SureClick® autoinjectors and prefilled single-dose syringes that either contain dry natural rubber (a derivative of latex) in the needle cover or are not made with natural rubber latex. The carton and "Instructions for Use" will state if your prefilled single-dose SureClick® autoinjector or prefilled single-dose syringe contains dry natural rubber. The single-dose Pushtronex® system (on-body infuser with prefilled cartridge) is not made with natural rubber latex.

Tell your healthcare provider or pharmacist about any prescription and over-the-counter medicines, vitamins, or herbal supplements you take.

Please see additional [Important Safety Information](#).



Actor portrayal



Let's ask the doctor about our LDL-C goal.

Track your LDL-C (bad cholesterol) progress



Know your numbers.

Knowing your current LDL-C level and what level you should be below can be an important part of managing bad cholesterol. A blood test called a lipid panel can determine your cholesterol level and with regular testing, when ordered by your doctor, you can track your progress with your doctor.



Consider asking your primary care provider or cardiologist these 5 questions.

1. What was my most recent LDL-C level?
2. What is the recommended level I should be below?
3. Why should I take Repatha® in addition to a statin?
4. When should I take my next test?
5. Can I stop taking Repatha® once I reach my recommended level?

My doctor says my recommended LDL-C level is below:

Mark your recommended level on the chart by drawing a line across



Date I started Repatha® (evolocumab):



Mark the date of your test →

TEST 1

TEST 2

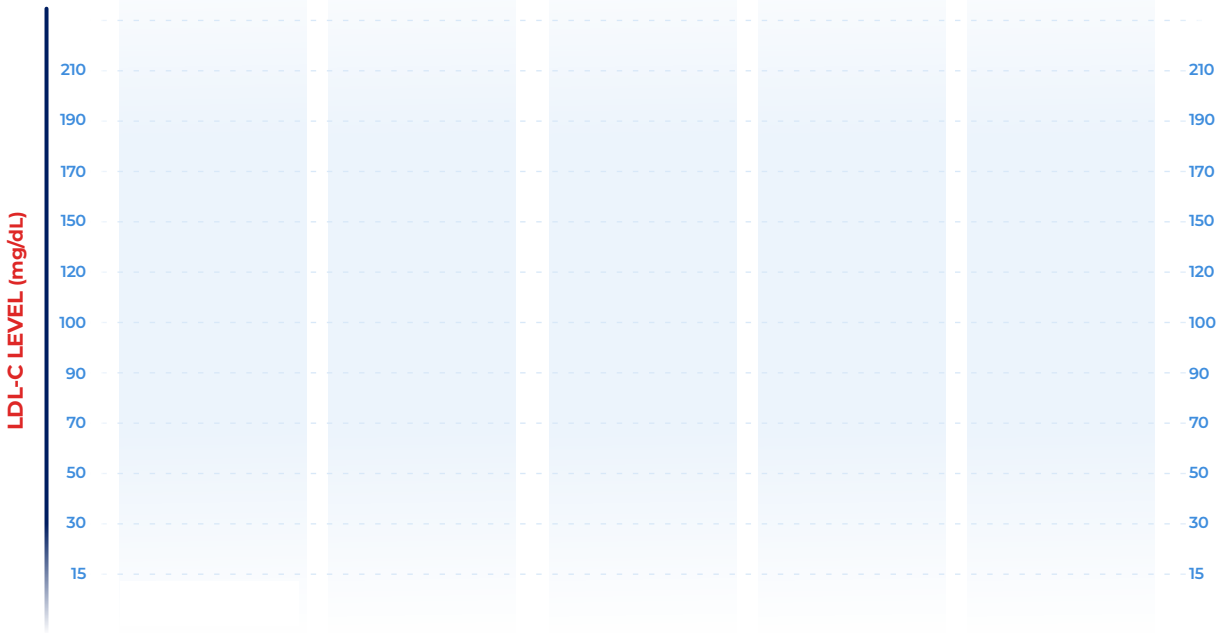
TEST 3

TEST 4

TEST 5

Enter your test results in the boxes →

___/___/___ ___/___/___ ___/___/___ ___/___/___ ___/___/___



When you see your doctor, don't forget to ask about **scheduling a follow-up** to check your level.



Remember that if you stop taking Repatha®, your bad cholesterol can increase. **You should not stop taking Repatha® without talking to your doctor.**

This is for your information only and is being provided for you to discuss with your doctor. This content is not intended to be a source of medical advice, diagnosis, or treatment and does not replace in any way independent medical advice or your physician's judgment regarding diagnosis or treatment recommendations.

IMPORTANT SAFETY INFORMATION

What are the possible side effects of Repatha®?

Repatha® can cause serious side effects including serious allergic reactions. Stop taking Repatha® and call your healthcare provider or seek emergency help right away if you have any of these symptoms: trouble breathing or swallowing, raised bumps (hives), rash or itching, swelling of the face, lips, tongue, throat or arms.

Please see additional Important Safety Information.

We're right here, right when you need us

Personalized patient support for your Repatha® (evolocumab) journey

Amgen® SupportPlus is designed to meet the specific needs of your particular Repatha® journey. This program provides you with customized support in the form of emails, texts, and access to a personalized dashboard that helps you start and stay on Repatha®.



Scan or click this QR code to enroll in Amgen® SupportPlus.

AMGEN® SUPPORTPLUS RESOURCES. AT NO COST TO YOU.



Amgen® Nurse Partners^{*} supplemental support to answer your questions and get you more comfortable administering Repatha® on your own



Information, education, and resources tailored to guide you along your unique treatment journey



Courtesy treatment/refill reminders via text or email that remind you when it's time to administer your Repatha® treatment or refill your prescription



Free sharps disposal container mailed to your home

To learn more, go to www.RepathaSupport.com

*Amgen® Nurse Partners are only available to patients that are prescribed certain Amgen products. They are not part of your treatment team and do not provide medical advice, nursing, or case management services. Amgen® Nurse Partners will not inject patients with Amgen medications. Patients should always consult their healthcare provider regarding medical decisions or treatment concerns.

PAYING FOR REPATHA®

COMMERCIAL

With the Repatha® Co-Pay Card, eligible, commercially insured patients could pay as little as

\$25

OR

\$50

FOR A 1-MONTH SUPPLY[†]

FOR A 3-MONTH SUPPLY[†]

[†]Eligibility criteria and program maximums apply. Co-pay support for a 3-month supply depends on the patient's insurance, as some plans may impose quantity or dispensing limitations. Please see full Terms and Conditions at <https://www.repatha.com/copaytcs>.

MEDICARE

AS LITTLE AS
\$50
OR LESS

for [about 74%] of Medicare prescriptions for Repatha® patients^{‡§}

MEDICAID

AS LITTLE AS
\$10
OR LESS

for [about 99%] of Medicaid prescriptions for Repatha® patients^{**}

About 9 out of 10 patients are covered for Repatha® across insurance types.^{††}



Uninsured?

Call Amgen® SupportPlus at 1-844-REPATHA for information about independent nonprofit foundations that may be able to help.^{‡‡}

[†]Based on IQVIA claims data from [01/01/2024 to 12/20/2024] using Medicare data. Patient out-of-pocket costs and insurance requirements may vary.

[‡]The patient's out-of-pocket costs may vary throughout the year depending on which phase of the Part D benefit the patient is currently in.

^{**}Based on IQVIA claims data from [1/1/2024 to 12/20/2024] using Medicaid data. Patient out-of-pocket costs and insurance requirements may vary.

^{††}Includes commercial, health exchange, Medicaid, and Medicare lives, as of [September 2025], based on MMIT data. Inclusion on formulary does not imply superior clinical efficacy or safety. This information is subject to change without notice. For the most up-to-date and complete information regarding coverage of Repatha®, please contact the relevant payer directly. Individual insurance requirements may vary.

^{‡‡}Eligibility for resources provided by independent nonprofit patient assistance programs is based on the nonprofit's criteria. Amgen has no control over these programs and provides information as a courtesy only.

Please see Important Safety Information.

The Repatha® Co-Pay Card can help **reduce out-of-pocket costs** for eligible, commercially insured patients.

You could pay as little as:

- **\$25 for a 1-month supply***
- **\$50 for a 3-month supply***

*Eligibility criteria and program maximums apply. Co-pay support for a 3-month supply depends on the patient's insurance, as some plans may impose quantity or dispensing limitations. Please see full Terms and Conditions at <https://www.repatha.com/copaytcs>.



To enroll and use the Repatha® Co-Pay Card, follow these **simple steps**:



Sign up for the Co-Pay Card by visiting [Repatha.com/copay](https://www.repatha.com/copay)



Print, screenshot, or save Co-Pay Card info shown on confirmation page or provided in your confirmation email



Share your Repatha® Co-Pay Card with your pharmacist

REPATHA® CO-PAY CARD SUMMARY OF TERMS AND CONDITIONS

It is important that every patient read and understand the full Repatha® (evolocumab) Co-pay Card Terms and Conditions. The following summary is not a substitute for reviewing the Terms and Conditions in their entirety.

As further described in the full terms and conditions, in general:

- The Repatha® Co-pay Card is open to patients with commercial insurance, regardless of financial need. The program is not valid for patients whose Repatha® prescription is paid for in whole or in part by Medicare, Medicaid, or any other federal or state healthcare program. It is not valid for cash-paying patients or where prohibited by law.
- With the Repatha® Co-pay Card, a commercially insured patient who meets eligibility criteria may lower their Repatha® monthly out-of-pocket costs. Monthly out-of-pocket costs include co-payment, co-insurance, and deductible out-of-pocket costs. Amgen will pay the remaining eligible out-of-pocket costs on behalf of the patient up to a Maximum Monthly Benefit, a Maximum Annual Program Benefit and/or the Patient Total Program Benefit. Patients are responsible for all amounts that exceed these limits.

- Offer is subject to change or discontinuation without notice.
- The Repatha® Co-pay Card provides support up to the Maximum Monthly Benefit, the Maximum Annual Program Benefit and/or Patient Total Program Benefit. If a patient's commercial insurance plan imposes different or additional requirements on patients who receive Repatha® Co-pay Card benefits, Amgen has the right to modify or eliminate those benefits. Whether you are eligible to receive the Maximum Monthly Benefit, Maximum Program Benefit or Patient Total Program Benefit is determined by the type of plan coverage you have. Please ask your Amgen SupportPlus Representative to help you understand eligibility for the Repatha® Co-pay Card, and whether your particular insurance coverage is likely to result in your reaching the Maximum Monthly Benefit, the Maximum Annual Program Benefit, or your Patient Total Program Benefit, by calling 1-844-REPATHA (1-844-737-2842).
- Please see the full Terms and Conditions at [Repatha.com/copaytcs](https://www.repatha.com/copaytcs).

Please see [Important Safety Information](#).

For adults at increased risk of a major adverse cardiovascular event



listen to your heart



IMPORTANT SAFETY INFORMATION

Do not use Repatha® if you are allergic to evolocumab or to any of the ingredients in Repatha®.

Before you start using Repatha®, tell your healthcare provider about all your medical conditions, including if you are allergic to rubber or latex, are pregnant or plan to become pregnant, or are breastfeeding or plan to breastfeed. Repatha® is available as prefilled single-dose SureClick® autoinjectors and prefilled single-dose syringes that either contain dry natural rubber (a derivative of latex) in the needle cover or are not made with natural rubber latex. The carton and “Instructions for Use” will state if your prefilled single-dose SureClick® autoinjector or prefilled single-dose syringe contains dry natural rubber. The single-dose Pushtronex® system (on-body infusor with prefilled cartridge) is not made with natural rubber latex.

Tell your healthcare provider or pharmacist about any prescription and over-the-counter medicines, vitamins, or herbal supplements you take.

What are the possible side effects of Repatha®?

Repatha® can cause serious side effects including serious allergic reactions. Stop taking Repatha® and call your healthcare provider or seek emergency help right away if you have any of these symptoms: trouble breathing or swallowing, raised bumps (hives), rash or itching, swelling of the face, lips, tongue, throat or arms.

The most common side effects of Repatha® include: runny nose, sore throat, symptoms of the common cold, flu or flu-like symptoms, back pain, high blood sugar levels (diabetes) and redness, pain, or bruising at the injection site.

Tell your healthcare provider if you have any side effect that bothers you or that does not go away.

These are not all the possible side effects of Repatha®. Ask your healthcare provider or pharmacist for more information. Call your healthcare provider for medical advice about side effects.

You are encouraged to report negative side effects of prescription drugs to the FDA. Visit www.fda.gov/medwatch, or call 1-800-FDA-1088.

APPROVED USE

What is Repatha®?

Repatha® is an injectable prescription medicine used:

- to reduce the risk of major adverse cardiovascular (CV) events, such as death from cardiovascular disease, heart attack, stroke, certain types of chest pain conditions (unstable angina) requiring hospitalization, or certain types of heart surgery, in adults at increased risk for these events.
- Along with diet and exercise to reduce low-density lipoprotein (LDL) or bad cholesterol in adults with high blood cholesterol levels called hypercholesterolemia and in adults with a type of high cholesterol called heterozygous familial hypercholesterolemia (HeFH).

Please see full Prescribing Information, including Patient Product Information.

For adults at increased risk of a major adverse cardiovascular event



listen to your
heart

Amgen®
SupportPlus
is here
for you!



When you're lowering your high LDL-C (bad cholesterol) and reducing your risk of a heart attack or stroke, having a support team is important.

Amgen® SupportPlus is right here, right when you need us, with customized information, education, and resources designed to help guide you on your unique Repatha® journey.

Scan or click this QR code to enroll



**Visit [Repatha.com](https://www.Repatha.com)
or call [1-844-REPATHA \(1-844-737-2842\)](tel:1-844-REPATHA)**

IMPORTANT SAFETY INFORMATION

Do not use Repatha® if you are allergic to evolocumab or to any of the ingredients in Repatha®.

Please see additional [Important Safety Information](#) and Repatha® full [Prescribing Information](#).