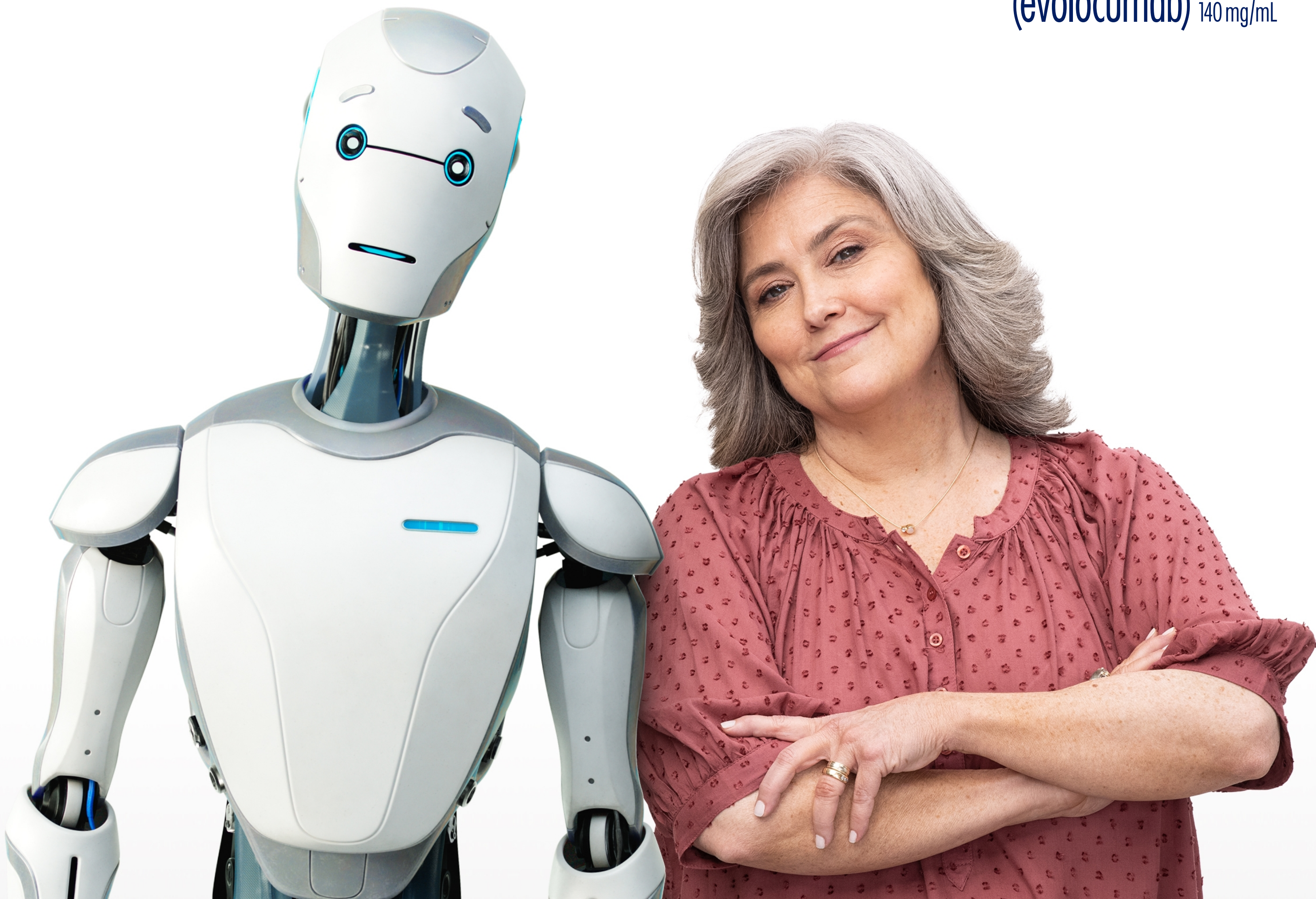


For adults with heart disease

# WELCOME TO REPATHA®

**Repatha**<sup>®</sup>  
(evolocumab) injection  
140 mg/mL



WELCOME TO  
REPATHA®

FILLING YOUR  
PRESCRIPTION

GETTING  
STARTED

HOW TO  
USE REPATHA®

WHAT TO  
EXPECT FROM  
REPATHA®

REAL  
PATIENT  
STORIES

IMPORTANT  
SAFETY  
INFORMATION

SUPPORT

## What you need to know about getting started, including co-pay card\* information.



\*For eligible private or commercial insured patients only. Program maximums apply. See page 2 for a summary of the terms and conditions.

### What is Repatha®?

Repatha® is an injectable prescription medicine used:

- in adults with cardiovascular disease to reduce the risk of heart attack, stroke, and certain types of heart surgery.
- along with diet alone or together with other cholesterol-lowering medicines in adults with high blood cholesterol levels called primary hyperlipidemia (including a type of high cholesterol called heterozygous familial hypercholesterolemia [HeFH]) to reduce low density lipoprotein (LDL) or bad cholesterol.

### Important Safety Information

**Do not use Repatha® if you** are allergic to evolocumab or to any of the ingredients in Repatha®.

**Please see additional Important Safety Information [here](#).**



# YOU MAY PAY AS LITTLE AS \$5 PER MONTH\*



## AMGEN Support<sup>+</sup>

**IF YOU HAVE COMMERCIAL INSURANCE, THE REPATHA® CO-PAY CARD MAY HELP LOWER YOUR OUT OF POCKET COSTS.**



**Sign up** for the Repatha® Co-pay Card at [Repatha.com/copay](https://Repatha.com/copay) or by calling **1-844-REPATHA (1-844-737-2842)**

**Share** your co-pay card information with your pharmacist

**Pick up** your prescription and pay as little as **\$5 per month\***

### SUMMARY OF TERMS AND CONDITIONS

It is important that every patient read and understand the full Repatha® (evolocumab) Co-pay Card Terms and Conditions. The following summary is not a substitute for reviewing the Terms and Conditions in their entirety.

As further described in the full terms and conditions, in general:

- The Repatha® Co-pay Card is open to patients with commercial insurance, regardless of financial need. The program is not valid for patients whose Repatha® prescription is paid for in whole or in part by Medicare, Medicaid, or any other federal or state healthcare program. It is not valid for cash-paying patients or where prohibited by law.
- With the Repatha® Co-pay Card, a commercially insured patient who meets eligibility criteria may pay as little as a \$5 co-pay per month for their Repatha® monthly out-of-pocket costs. Monthly out-of-pocket costs include co-payment, co-insurance, and deductible out-of-pocket costs. Amgen will pay the remaining eligible out-of-pocket costs on behalf of the patient up to a Maximum Monthly Benefit, a Maximum Annual Program Benefit and/or the Patient Total Program Benefit. Patients are responsible for all amounts that exceed these limits.
- Offer is subject to change or discontinuation without notice.
- The Repatha® Co-pay Card provides support up to the Maximum Monthly Benefit, the Maximum Annual Program Benefit and/or Patient Total Program Benefit. If a patient's commercial insurance plan imposes different or additional requirements on patients who receive Repatha® Co-pay Card benefits, Amgen has the right to modify or eliminate those benefits. Whether you are eligible to receive the Maximum Monthly Benefit, Maximum Program Benefit or Patient Total Program Benefit is determined by the type of plan coverage you have. Please ask your Amgen SupportPlus Representative to help you understand eligibility for the Repatha® Co-pay Card, and whether your particular insurance coverage is likely to result in your reaching the Maximum Monthly Benefit, the Maximum Annual Program Benefit, or your Patient Total Program Benefit, by calling 1-844-REPATHA (1-844-737-2842).
- Please see the full Terms and Conditions at [Repatha.com/copaytcs](https://Repatha.com/copaytcs).

### NOT COMMERCIALY INSURED?

Visit [Repatha.com/cost](https://Repatha.com/cost) to learn more about what you might pay for Repatha®.

**VISIT [REPATHA.COM/COST](https://Repatha.com/cost)**

Or call your insurance company to understand more about your coverage.

## A FEW THINGS YOU SHOULD CONSIDER BEFORE YOUR FIRST INJECTION:



Plan your injection dates—the first one and the ones after. Each carton has a month's supply of Repatha<sup>®</sup>.



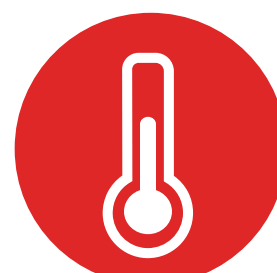
Make room in the refrigerator (36°F to 46°F) to store Repatha<sup>®</sup> in its original carton to protect it from the light. Before injecting Repatha<sup>®</sup>, you'll need to take the device out of the fridge and let it warm up to room temperature.



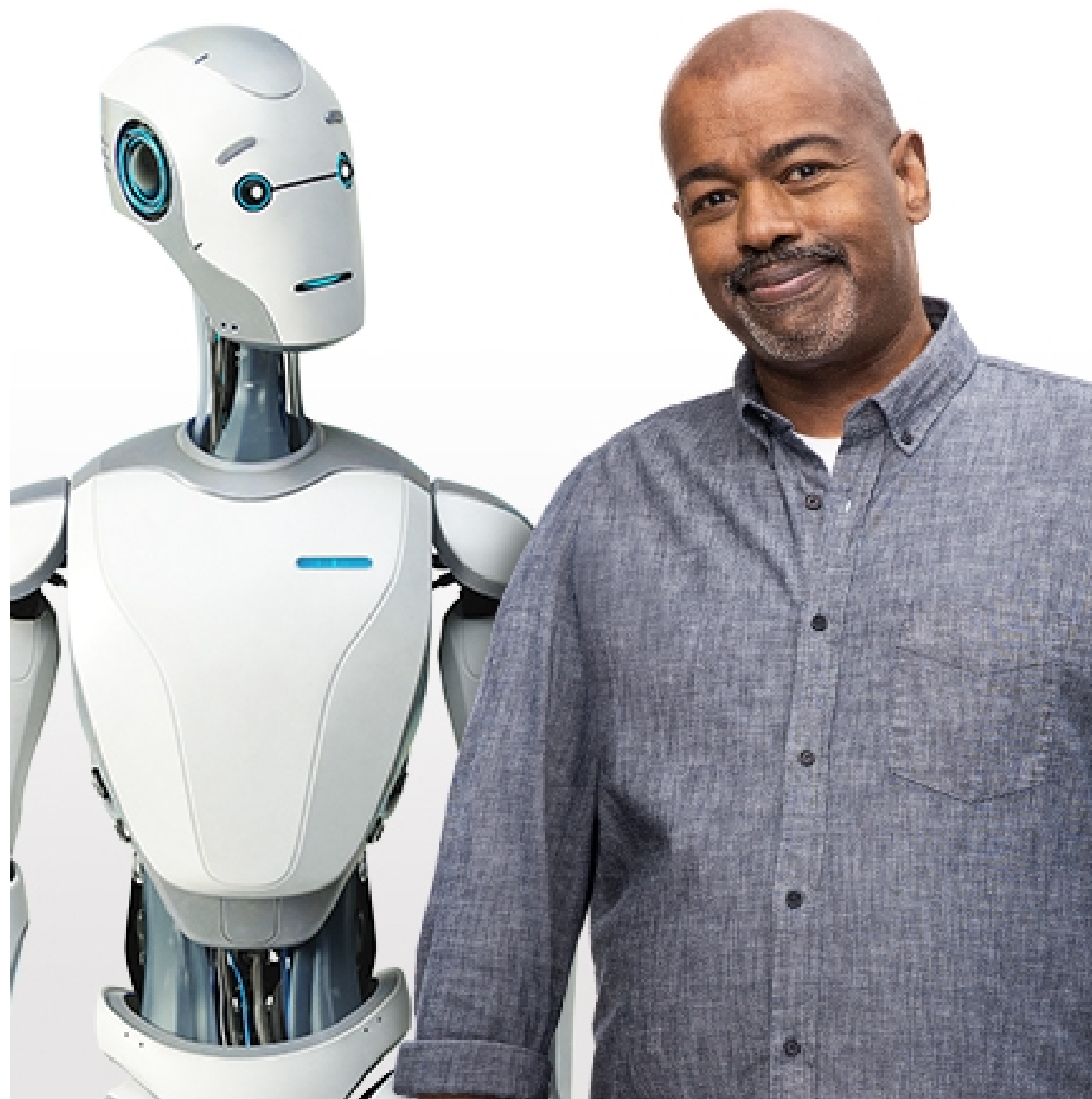
Be ready to dispose of the used device in a sharps disposal container (available at your pharmacy).



When traveling, check your airlines' carry-on policy on needles. Bring a copy of your prescription or doctor's note for airport security. Make sure Repatha<sup>®</sup> is clearly labeled or in its original carton.



Repatha<sup>®</sup> will remain good for use for up to 30 days if kept at room temperature (68° to 77°F).



For detailed information prior to injection, please read the [Instructions for Use](#).

**SIGN UP FOR AMGEN<sup>®</sup> Support<sup>+</sup>**

Amgen<sup>®</sup> SupportPlus offers resources and support to help you track your Repatha<sup>®</sup> treatment. If you'd like, click below to sign up for reminders.

**SIGN UP FOR REMINDERS**



# HOW TO USE REPATHA®

**Repatha**<sup>®</sup>  
(evolocumab) injection 140 mg/mL

WELCOME TO  
REPATHA<sup>®</sup>

FILLING YOUR  
PRESCRIPTION

GETTING  
STARTED

HOW TO  
USE REPATHA<sup>®</sup>

WHAT TO  
EXPECT FROM  
REPATHA<sup>®</sup>

REAL  
PATIENT  
STORIES

IMPORTANT  
SAFETY  
INFORMATION

SUPPORT

## EVERY 2 WEEKS

140 mg/mL



### SureClick<sup>®</sup> Autoinjector

Single-dose prefilled autoinjector. At-home self-injection with hand-held device.



See video demonstrating how to use your SureClick<sup>®</sup> Autoinjector

Click [here](#) for Instructions for Use

## ONCE A MONTH

420 mg/3.5 mL



### Pushtronex<sup>®</sup> System

Single-dose on-body infusor with prefilled cartridge. At-home self-injection with hands-free device.



See video demonstrating how to use your Pushtronex<sup>®</sup> System

Click [here](#) for Instructions for Use

Prior to injection, please read the Instructions for Use, which is located in the back of every box of Repatha<sup>®</sup>.

**Dedicated Amgen Nurse Partners\* can offer supplemental support. Nurses are available 7 days a week by phone. Call 1-844-REPATHA (1-844-737-2842) 8am - 8pm EST.**

\*Amgen Nurse Partners are nurses by training, but they are not part of your treatment team or an extension of your doctor's office.

### IMPORTANT SAFETY INFORMATION

**Before you start using Repatha<sup>®</sup>**, tell your healthcare provider about all your medical conditions, including if you are allergic to rubber or latex, are pregnant or plan to become pregnant, or are breastfeeding or plan to breastfeed. The needle covers on the single-dose prefilled syringes and the inside of the needle caps on the single-dose prefilled SureClick<sup>®</sup> autoinjectors contain dry natural rubber. The single-dose Pushtronex<sup>®</sup> system (on-body infusor with prefilled cartridge) is not made with natural rubber latex.

Tell your healthcare provider or pharmacist about any prescription and over-the-counter medicines, vitamins, or herbal supplements you take.

4 Please see additional Important Safety Information [here](#).

# WHAT TO EXPECT FROM REPATHA®



WELCOME TO  
REPATHA®

For adults with heart disease

## LOWER BAD CHOLESTEROL

You may want to keep track of your bad cholesterol and continue taking Repatha®. Taken with a statin, it can help dramatically lower bad cholesterol. In clinical trials:

- Up to **90%** of people saw their bad cholesterol levels drop dramatically to 70 mg/dL or below at 48 weeks
- Repatha® works in just **1 month**
- By adding Repatha® to a statin, patients lowered their bad cholesterol by an average of 63% **in just 3 months**

Bad cholesterol is not a curable condition, but it can be managed. Continue taking Repatha® so that you can see positive results. If you stop taking Repatha® your LDL cholesterol levels can increase. You should not stop taking Repatha® without talking to your doctor.

FILLING YOUR  
PRESCRIPTION

GETTING  
STARTED

HOW TO  
USE REPATHA®

WHAT TO  
EXPECT FROM  
REPATHA®

### TRACKING BAD CHOLESTEROL (LDL-C) AND SETTING GOALS

You may want to download and use this editable PDF chart to keep track of your bad cholesterol number (measured in mg/dL) and set your goals as you go forward with Repatha®. When you see your doctor, don't forget to schedule a follow-up to check your levels.

[DOWNLOAD TRACKER](#)

REAL  
PATIENT  
STORIES

IMPORTANT  
SAFETY  
INFORMATION

### IMPORTANT SAFETY INFORMATION

#### What are the possible side effects of Repatha®?

Repatha® can cause serious side effects including serious allergic reactions. Stop taking Repatha® and call your healthcare provider or seek emergency help right away if you have any of these symptoms: trouble breathing or swallowing, raised bumps (hives), rash or itching, swelling of the face, lips, tongue, throat or arms.

SUPPORT



# HEAR FROM REAL PEOPLE TAKING REPATHA®

**Repatha**<sup>®</sup>  
(evolocumab) injection  
140 mg/mL

WELCOME TO  
REPATHA®

FILLING YOUR  
PRESCRIPTION

GETTING  
STARTED

HOW TO  
USE REPATHA®

WHAT TO  
EXPECT FROM  
REPATHA®

REAL  
PATIENT  
STORIES

IMPORTANT  
SAFETY  
INFORMATION

SUPPORT



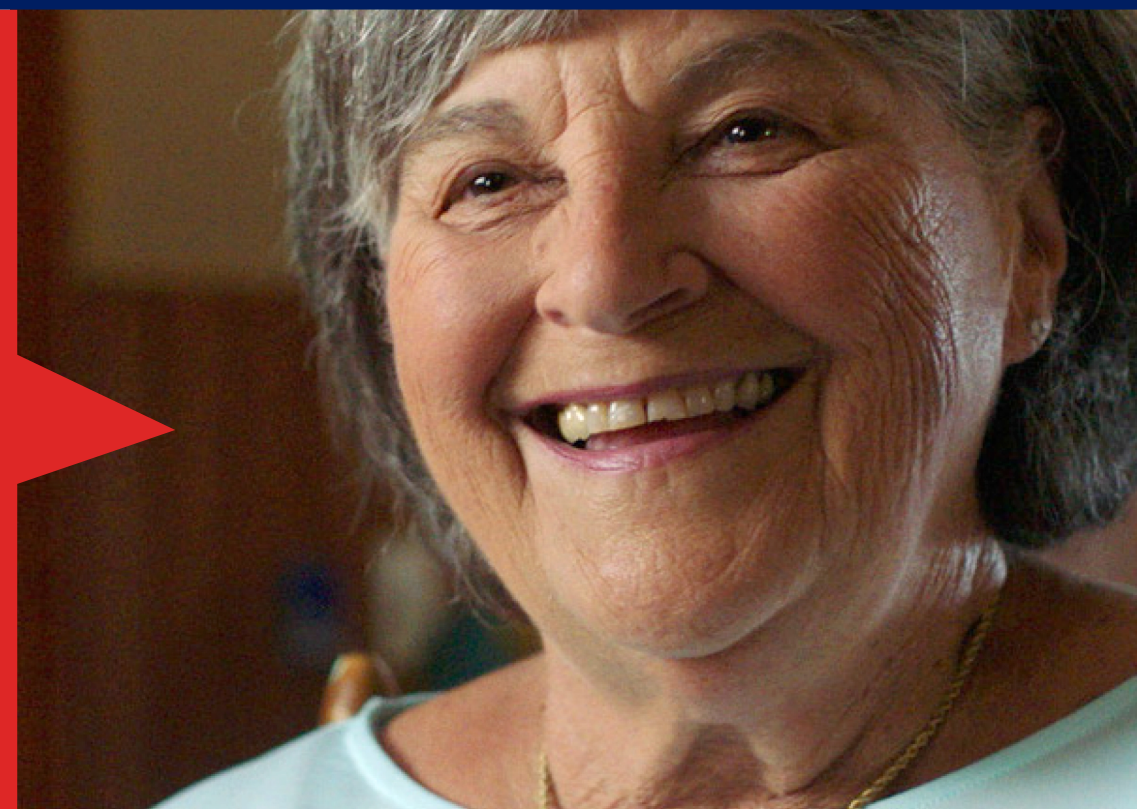
“ I always struggled to get my cholesterol down to an acceptable level, and I **COULDN'T GET LDLs UNDER 100**. After being on Repatha® for not even a few months, my LDLs went down to 26. Repatha® changed the game. ”

- ANDY

“ With Repatha®, **MY LDL HAD DROPPED FROM OVER 100, DOWN TO 40**.

My grandchildren know I have Repatha®, and they know it's working for me. ”

- CATHY



“ When I first went on Repatha®, **my LDL went from 130 all the way down to 35**.

I am very happy to see my LDL report now, and I thank Repatha® for that. ”

- JOE

*Patient testimonials represent their individual experiences with Repatha®. Results may vary.*

In a study, adults with cardiovascular disease taking Repatha + statin lowered their bad cholesterol by an average of 63% in 3 months.

**Want to hear more stories? Go to [www.Repatha.com/patient-stories](http://www.Repatha.com/patient-stories)**

## IMPORTANT SAFETY INFORMATION

### What are the possible side effects of Repatha®? (Continued)

The most common side effects of Repatha® include: runny nose, sore throat, symptoms of the common cold, flu or flu-like symptoms, back pain, high blood sugar levels (diabetes) and redness, pain, or bruising at the injection site.

Tell your healthcare provider if you have any side effect that bothers you or that does not go away.

These are not all the possible side effects of Repatha®. Ask your healthcare provider or pharmacist for more information. Call your healthcare provider for medical advice about side effects.



# IMPORTANT SAFETY INFORMATION



WELCOME TO  
REPATHA®

FILLING YOUR  
PRESCRIPTION

GETTING  
STARTED

HOW TO  
USE REPATHA®

WHAT TO  
EXPECT FROM  
REPATHA®

REAL  
PATIENT  
STORIES

IMPORTANT  
SAFETY  
INFORMATION

SUPPORT

**Do not use Repatha® if you** are allergic to evolocumab or to any of the ingredients in Repatha®.

**Before you start using Repatha®**, tell your healthcare provider about all your medical conditions, including if you are allergic to rubber or latex, are pregnant or plan to become pregnant, or are breastfeeding or plan to breastfeed. The needle covers on the single-dose prefilled syringes and the inside of the needle caps on the single-dose prefilled SureClick® autoinjectors contain dry natural rubber. The single-dose Pushtronex® system (on-body infusor with prefilled cartridge) is not made with natural rubber latex.

Tell your healthcare provider or pharmacist about any prescription and over-the-counter medicines, vitamins, or herbal supplements you take.

## **What are the possible side effects of Repatha®?**

Repatha® can cause serious side effects including serious allergic reactions. Stop taking Repatha® and call your healthcare provider or seek emergency help right away if you have any of these symptoms: trouble breathing or swallowing, raised bumps (hives), rash or itching, swelling of the face, lips, tongue, throat or arms.

The most common side effects of Repatha® include: runny nose, sore throat, symptoms of the common cold, flu or flu-like symptoms, back pain, high blood sugar levels (diabetes) and redness, pain, or bruising at the injection site.

Tell your healthcare provider if you have any side effect that bothers you or that does not go away.

These are not all the possible side effects of Repatha®. Ask your healthcare provider or pharmacist for more information. Call your healthcare provider for medical advice about side effects.

**You are encouraged to report negative side effects of prescription drugs to the FDA. Visit [www.fda.gov/medwatch](http://www.fda.gov/medwatch), or call 1-800-FDA-1088.**

**Please see Repatha® full [Prescribing Information](#).**

# WE'RE HERE FOR YOU



WELCOME TO  
REPATHA®

There's a lot to learn when starting a new medication. It's natural to have questions. We're here to help you start and stay on therapy.

GO TO  
[REPATHASUPPORT.COM](https://repathasupport.com)

GIVE US A CALL AT  
1-844-REPATHA

FILLING YOUR  
PRESCRIPTION

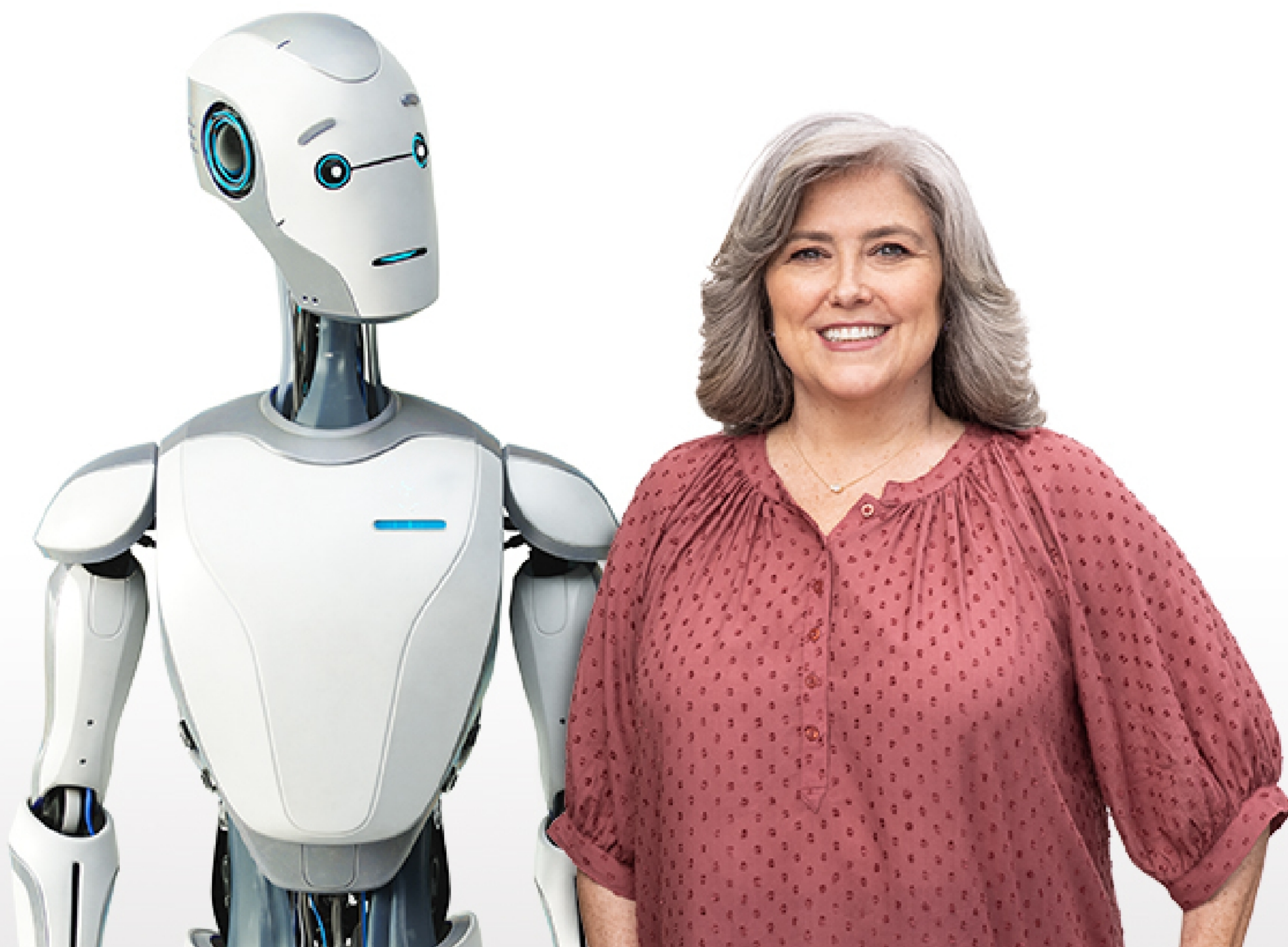
GETTING  
STARTED

HOW TO  
USE REPATHA®

WHAT TO  
EXPECT FROM  
REPATHA®

REAL  
PATIENT  
STORIES

IMPORTANT  
SAFETY  
INFORMATION



## Want to plan ahead?

You may want to use the doctor discussion guide to help facilitate a productive conversation with your doctor during your future follow-up appointments.

DOWNLOAD DOCTOR  
DISCUSSION GUIDE

SUPPORT





## Tracking my bad cholesterol (LDL)

You may want to use this chart to keep track of your bad cholesterol number (measured in mg/dL) as you go forward on Repatha<sup>®</sup>. When you see your doctor, don't forget to ask about **scheduling a follow-up** to check your levels.

**MY GOAL:**

(set by my doctor)

**CHECK IN/VISIT**

**DATE**

<i>Example:</i> Today's visit	3/26/2023	LDL-C 148	NOTES/THOUGHTS Received Repatha <sup>®</sup> prescription
<b>Today's visit</b>			
<b>Follow-up 1</b>			
<b>Follow-up 2</b>			
<b>Follow-up 3</b>			
<b>Follow-up 4</b>			

**Remember that if you stop taking Repatha<sup>®</sup>, your bad cholesterol can increase. You should not stop taking Repatha<sup>®</sup> without talking to your doctor.**

**Approved Use**

Repatha<sup>®</sup> is an injectable prescription medicine used:

- in adults with cardiovascular disease to reduce the risk of heart attack, stroke, and certain types of heart surgery.
- along with diet alone or together with other cholesterol-lowering medicines in adults with high blood cholesterol levels called primary hyperlipidemia (including a type of high cholesterol called heterozygous familial hypercholesterolemia [HeFH]) to reduce low density lipoprotein (LDL) or bad cholesterol.

**Important Safety Information**

**Do not use Repatha<sup>®</sup> if you** are allergic to evolocumab or to any of the ingredients in Repatha<sup>®</sup>.

**Please see additional Important Safety Information on page 2.**



## **Important Safety Information (Continued)**

**Before you start using Repatha® (evolocumab)**, tell your healthcare provider about all your medical conditions, including if you are allergic to rubber or latex, are pregnant or plan to become pregnant, or are breastfeeding or plan to breastfeed. The needle covers on the single-dose prefilled syringes and the inside of the needle caps on the single-dose prefilled SureClick® autoinjectors contain dry natural rubber. The single-dose Pushtronex® system (on-body infusor with prefilled cartridge) is not made with natural rubber latex.

Tell your healthcare provider or pharmacist about any prescription and over-the-counter medicines, vitamins, or herbal supplements you take.

### **What are the possible side effects of Repatha®?**

Repatha® can cause serious side effects including serious allergic reactions. Stop taking Repatha® and call your healthcare provider or seek emergency help right away if you have any of these symptoms: trouble breathing or swallowing, raised bumps (hives), rash or itching, swelling of the face, lips, tongue, throat or arms.

The most common side effects of Repatha® include: runny nose, sore throat, symptoms of the common cold, flu or flu-like symptoms, back pain, high blood sugar levels (diabetes) and redness, pain, or bruising at the injection site.

Tell your healthcare provider if you have any side effect that bothers you or that does not go away.

These are not all the possible side effects of Repatha®. Ask your healthcare provider or pharmacist for more information. Call your healthcare provider for medical advice about side effects.

**You are encouraged to report negative side effects of prescription drugs to the FDA. Visit [www.fda.gov/medwatch](http://www.fda.gov/medwatch), or call 1-800-FDA-1088.**

**Please see Repatha® full Prescribing Information.**

© 2020–2023 Amgen Inc. All rights reserved. USA-CCF-80529